

MEMBER
School
Nutrition
Association



2024-2025
School Year

Snack Guide



©PRODUCTS OF HERSHEY CREAMERY CO. — NOT AFFILIATED WITH HERSHEY'S CHOCOLATE



Smart Snack
Approved



*Celebrating
130 Years of
Quality*

From a modest 1894 farm house in Lancaster, PA to a growing 21st century family owned organization, Hershey's Ice Cream is focused on providing amazing real ice cream products and industry leading service.

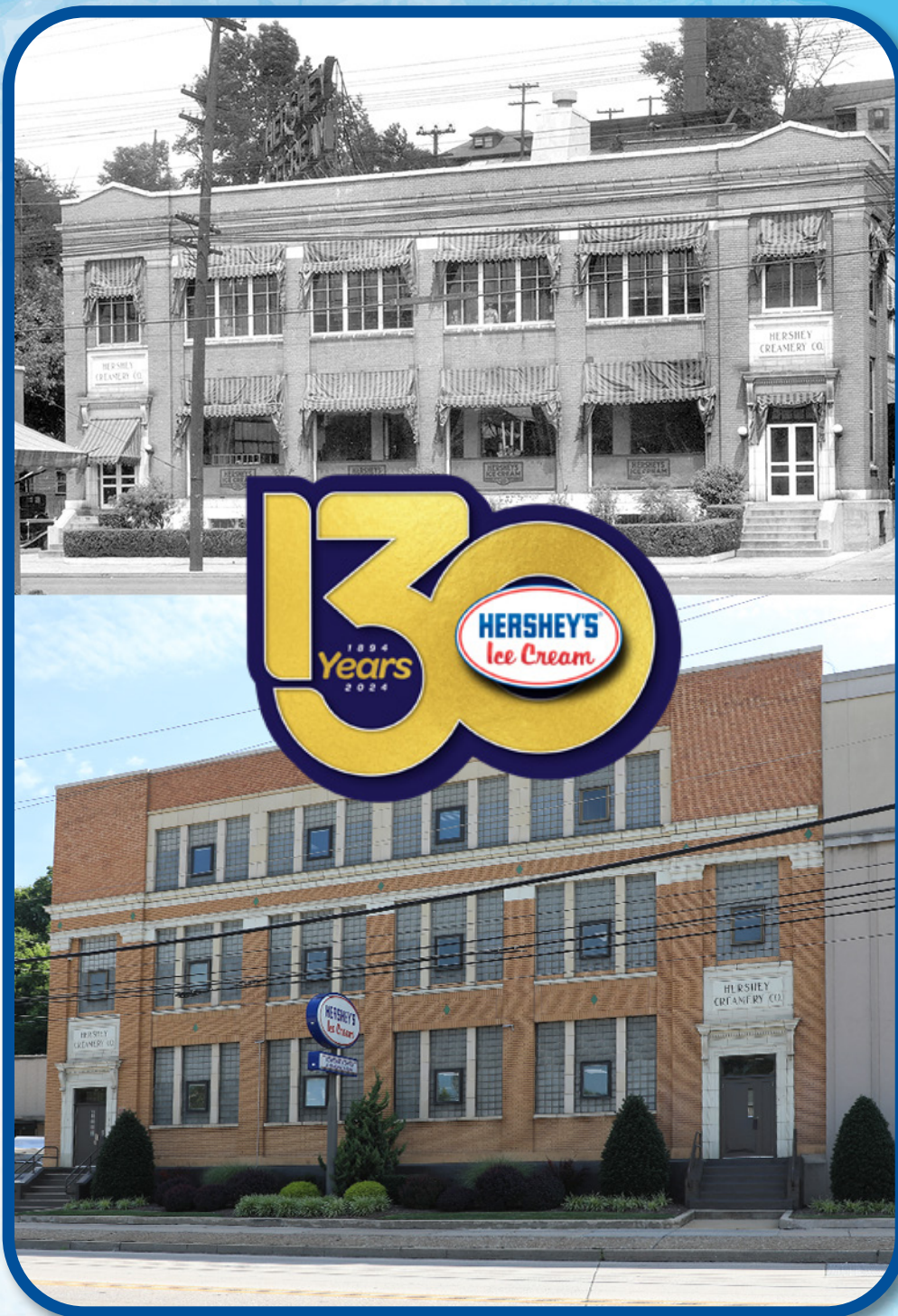
More than just a product, Hershey's Ice Cream wants to partner with you to develop amazing lunch experiences that are both fun and memorable for your students. From 100% fruit juice and fat free yogurt to real ice cream treats – there is something delicious for every age and demographic!

Our focus is on being even better! As your partner we are excited to announce innovative new products, clean label options and great new marketing programs. Combined with a proven history of quality products and allergen control protocols we will give you the confidence that Hershey's Ice Cream is the best smart snack frozen treat option for all of your locations.

Together we will make lunch memorable! Thank you for choosing Hershey's Ice Cream!



©PRODUCTS OF HERSEY CREAMERY CO. – NOT AFFILIATED WITH HERSEY'S CHOCOLATE



We are the only
Complete School Program
for Frozen Desserts



Smart Snack Approved

Hershey's Ice Cream cares about schools. We strive to make your students happy, increase your revenue, and increase your average daily participation!

We have been partnering with schools for many years and currently serve over 15,000 in the U.S. and growing! When you partner with us, not only will you get high quality delicious treats, but a full-service program that will make your students happy, save you time, and make you more money!

- **A variety of Smart Snack approved items and a full catalog of premium products** for catering, socials, concessions, and fundraising. We're a one stop shop!
- **Exceptional customer service;** we will save you and your staff time by stocking your freezers and rotating your products to ensure quality and freshness.
- Ask your sales representative about the **our FREE, professionally designed freezers** (that are maintenance free) **or our freezer bag option.**
- **Free exciting marketing materials that will really catch the students attention!** Full access to posters, menu boards that can be edited, allergen charts, even ready to use social media posts and so much more!
- **A fully loaded Promotional Calendar to add excitement and drive participation.** Ongoing support and partnership—you will know who to call!



If you would like to learn more about Hershey's® Smart Snacks or would like to download our free resources, please visit our resource page: www.hersheycicecream.com/smart-snacks-in-schools/resources.html

*Must meet volume requirements



Smart Snack Approved

Give your students something to smile about with

The Largest (and Tastiest) Selection of Smart Snack Items

Hershey's Ice Cream is proud of our wide array of Smart Snack approved products. In fact, we proudly produce the largest number of products to benefit your school of any frozen dessert manufacturer in the U.S.

With our variety of options, menu fatigue will never be a problem. Additionally, our wide range will ensure that you have products to please every student's or staff's needs. All of this means greater participation and profit for your school's bottom line.

Here are just a few of the many benefits of serving Hershey's Ice Cream Smart Snack dessert items in your school:

- ***New items that are student centered, revenue driven.*** We create products that taste better than any other manufacturer and are priced for profit. Our record of serving over 15,000 K-12 schools and millions of students, is a testament to the quality that you receive.
- ***Clean label options available!*** We are continually advancing our product line in ways to meet the needs and demands of today's families and students. We have carefully crafted products that no longer use HFCS, artificial colors or flavors. The size of our company, long history, and experience gives us the teams of people we need to be at the forefront of good taste and great selling products.
- ***All items will create real smiles!*** More smiles means happy students. Happy students are ones that will want to purchase our products everyday. We've had many schools tell us that their participation rates and revenue increased after they switched to Hershey's Ice Cream's Smart Snack products. Why not join them?





Meeting Smart Snacks guidelines
with delicious products!

Great for your tray line or a la carte!



In an effort to keep pace with
what will be a record sales
year for Hershey's Ice Cream's
Smart Snacks product line, we
will be focusing on production
of our top items for the
2024-2025 school year.



	SKU	ITEM	FL OZ	SERVING (g)	CASE COUNT	CALORIES	FAT CALORIES	TOTAL FAT (g)	SAT FAT (g)	SODIUM (mg)	CARBS (g)	SUGAR (g)	ADDED SUGAR (g)	NO HIGH FRUCTOSE CORN SYRUP	NO ARTIFICIAL COLOR	NO ARTIFICIAL FLAVOR
Sticks	24682-31000	Fruit Punch Freeze Polar Blast Bar †	2.25	68	36	80	0	0	0	10	21	18	16	✓		
	24682-31150	Chocolate Scooter Bar	2.75	68	36	170	50	6	1.5	85	26	13	11			
	24682-31151	Strawberry Scooter Bar	2.75	68	36	160	50	6	1.5	75	25	13	12			
	24682-31152	Fudge-O Bar	2.00	68	36	90	0	0	0	40	20	14	8			
Cones	24682-31306	Low Fat Cookies & Cream Cone	4.00	62	24	140	20	2.5	1.5	80	24	14	10	✓		
	24682-31303	Low Fat Crazy Cone	4.00	73	24	140	20	2.5	1.5	95	26	16	11	✓		
	24682-31307	Low Fat Vanilla Chocolate Twist Cone	4.00	64	24	140	20	2	1.5	60	23	14	10			
Sandwiches	24682-31319	Low Fat Vanilla Ice Cream Sandwich	4.00	65	24	140	20	2.5	1.5	140	27	15	11			
	24682-31355	Low Fat Cookies & Cream Ice Cream Sandwich	4.00	65	24	140	20	2.5	1.5	150	27	15	10			
	24682-31352	Vanilla Mighty Mini Sandwich	2.50	44	48	100	20	2	1	100	19	10	7			
Dessert Cups	24682-31669	Low Fat Vanilla Ice Cream Cup †	3.00	52	48	100	15	1.5	1	35	16	12	7	✓	✓	✓
	24682-31677	Low Fat Chocolate Sundae Cup †	3.00	52	48	100	15	1.5	1	35	18	13	8	✓	✓	✓
	24682-31676	Low Fat Strawberry Sundae Cup †	3.00	52	48	100	15	1.5	1	35	18	14	8	✓	✓	✓
Silly Tubes	24682-40001	SillyTubes Push-Up Pop	2.75	60	24	60	0	0	0	0	16	14	7	✓	✓	✓
Twister Cups	24682-50245	Fat Free Cotton Candy Twister Cup †	3.75	66	18	90	0	0	0	40	19	14	12	✓		
Fruit Bars	24682-31234	Strawberry Tropi-Kool Fruit Bar †	4.00	115	24	110	0	0	0	10	28	24	21	✓	✓	✓
	24682-31232	Mango Tropi-Kool Fruit Bar †	4.00	115	24	110	0	0	0	0	27	23	16	✓	✓	✓
Juice Rush®	24682-31700	Cherry Blue Raspberry Juice Rush Cup †	4.40	140	80	50	0	0	0	0	12	12	0	✓		✓
	24682-31702	Strawberry Mango Juice Rush Cup †	4.40	140	80	50	0	0	0	0	12	12	0	✓	✓	✓
Foam Cups	24682-31570	Fat Free Vanilla Yogurt Cup †	4.00	71	24	90	0	0	0	45	20	15	13	✓	✓	
	24682-31480	Lemon Sherbet Cup †	4.00	96	24	140	15	1.5	1	35	30	23	21			✓
	24682-31490	Orange Sherbet Cup †	4.00	96	24	140	15	1.5	1	35	30	23	20			✓
	24682-31500	Raspberry Sherbet Cup †	4.00	96	24	140	15	1.5	1	30	32	26	23			✓
Cookies	49578-33724	Whole Grain Chocolate Brownie Cookie	10Z	28	360	100	30	3.5	1	90	17	8	8	✓	✓	✓
	49578-33723	Whole Grain Sugar Cookie	10Z	28	360	110	30	3.5	1	90	18	8	8	✓	✓	✓
	49578-33721	Whole Grain Chocolate Chip Cookie	10Z	28	360	100	30	3.5	1	85	18	9	9	✓	✓	✓
	49578-33725	Whole Grain Rainbow Candy Cookie	10Z	28	360	100	30	3	1	85	18	9	8	✓		



Smart Snack Approved

Quality & Safety

Two of the many reasons we serve over 15,000 schools daily

Allergen

Hershey's Ice Cream is committed to producing the safest food possible, we utilize many tools to maintain this promise. Outlined in our Allergen Control Program, that is reviewed at least annually, we state procedures for the proper handling of allergens from receiving of raw ingredients, manufacturing of products, and finished product distribution. All employees are required to have continual training in all aspects of allergen handling. We focus on the major six allergens (milk, eggs, soy, wheat, peanuts and tree-nuts: pecan, pistachio, walnut, hazelnut, cashews, almonds, and coconut) utilized in the facility that are clearly identified on each individual package.

Hershey's Ice Cream does not manufacture products on production lines that are dedicated solely to allergen or non-allergen containing products. We are committed to accurately manufacturing and labeling our products so consumers can easily determine if our products are suitable for their particular dietary needs and restrictions, providing our consumers with a safe product. Our production schedule is set to run one flavor per machine per day. On days where multiple flavors must be manufactured, flavors are arranged in an order to prevent one flavor from being contaminated with allergens present in the preceding flavor(s). Our packaging has a "Contains:" statement after the ingredient list, this statement clearly defines the allergen(s) being utilized in the particular product.

Upon completion of each production day, a dedicated crew disassembles the equipment, washes and sanitizes using validated cleaning procedures, and then reassembles the cleaned equipment for the following production day. Testing is performed by the Quality Assurance Department to verify the cleanliness before production can begin. Production operators perform a second sanitation step prior to producing products.

Hershey's Ice Cream is audited on our manufacturing processes and procedures, including our Allergen Control Program, by outside regulatory agencies including the Food and Drug Administration, quarterly audits by the Pennsylvania Department of Agriculture, and annual audits by the Public Health Activity Department of the U.S. Army. Hershey's Ice Cream also undergoes an independent 3rd party audit conducted by Merieux Nutrasciences LLC annually.

Kosher Certified

June 19, 2023
30 Sivan 5783

This letter is to confirm that the KOF-K has granted Kosher certification to the Hershey Creamery Company for their Ice Cream and Sorbet Products produced at their facility in Harrisburg, PA. This certification is valid through June 30, 2024 and is subject to renewal at that time.

This letter is for information purposes only and is not a kosher certificate. Upon request an itemized kosher certificate is available.

Sincerely,
Rabbi M. Reich
Rabbinic Administrator
Office: (201) 837-0500 Ext 2128
Cell: (845) 323-5057
Fax: (201) 917-1489

MR/NN 2K05783



**To download our full Allergen and Kosher letters,
please visit our resource page:**
www.hersheyicecream.com/smart-snacks-in-schools/resources.html



FRUIT PUNCH FREEZE POLAR BLAST® FRUIT JUICE BAR

Fruit punch flavored frozen fruit juice bar.



Serving Size: 1 Bar 2.25 Fl Oz. (68g)	% DAILY VALUE	
Calories:	80	
Total Fat	0g	0%
Saturated Fat	0g	0%
Trans Fat	0g	
Cholesterol	0mg	0%
Sodium	10mg	0%
Total Carbohydrate	21g	8%
Dietary Fiber	0g	0%
Total Sugars	18g	
Includes 16g Added Sugars		32%
Protein	0g	
Nutrients		
		% DAILY VALUE
Vitamin D	0mcg	0%
Calcium	8mg	0%
Iron	0mg	0%
Potassium	78mg	2%

Under 100 Calories

Fat Free

**No High Fructose
Corn Syrup**



INGREDIENTS:

APPLE JUICE (WATER, APPLE JUICE CONCENTRATE), SUGAR, CORN SYRUP, CITRIC ACID, NATURAL & ARTIFICIAL FLAVOR, ASCORBIC ACID, LOCUST BEAN GUM, GUAR GUM, CARRAGEENAN, RED 40.

REVIEWED
MARCH, 2024



ITEM #: 24682-31000

CASE COUNT: 36



CHOCOLATE SCOOTER ICE CREAM BAR

A creamy chocolate center surrounded by artificially flavored fat free vanilla ice cream and cake crunch.

Serving Size: 1 Bar 2.75 Fl Oz. (68g)		% DAILY VALUE
Calories:	170	
Total Fat	6g	8%
Saturated Fat	1.5g	8%
Trans Fat	0g	
Cholesterol	0mg	0%
Sodium	85mg	4%
Total Carbohydrate	26g	9%
Dietary Fiber	0g	0%
Total Sugars	13g	
Includes 11g Added Sugars		22%
Protein	2g	
Nutrients		% DAILY VALUE
Vitamin D	0mcg	0%
Calcium	95mg	8%
Iron	0mg	2%
Potassium	150mg	4%
Vitamin A	4mcg	0%



Chocolate Scooter Crunch Bar

INGREDIENTS:

NONFAT ICE CREAM (NONFAT MILK, SUGAR, CORN SYRUP, WHEY, HIGH FRUCTOSE CORN SYRUP, MALTODEXTRIN, MONO & DIGLYCERIDES, LOCUST BEAN GUM, CELLULOSE GUM, GUAR GUM, FOOD STARCH, POLYSORBATE 80, CARRAGEENAN, WATER, VITAMIN A PALMITATE), FLAVORED CENTER (WATER, SUGAR, COCOA [PROCESSED WITH ALKALI], WHEY, DEXTROSE, CARAMEL COLOR, LOCUST BEAN GUM, CARRAGEENAN, ARTIFICIAL FLAVOR, RED 40, BLUE 1), CRUNCH COATING (CAKE CRUNCHES [BLEACHED WHEAT FLOUR, SUGAR, PALM OIL, CARAMEL COLOR, COCOA, SALT, BAKING SODA, ARTIFICIAL FLAVOR], NONFAT MILK POWDER, SOYBEAN OIL, REFINED COCONUT OIL, SOY LECITHIN).
CONTAINS: MILK, SOY, WHEAT.

REVIEWED
MARCH, 2024

MEMBER
School
Nutrition
Association



ITEM #: 24682-31150

CASE COUNT: 36



STRAWBERRY SCOOTER ICE CREAM BAR

A strawberry center core covered with artificially flavored fat free vanilla ice cream and cake crunch.

Serving Size: 1 Bar 2.75 Fl Oz. (68g)	% DAILY VALUE	
Calories:	160	
Total Fat	6g	8%
Saturated Fat	1.5g	8%
Trans Fat	0g	
Cholesterol	0mg	0%
Sodium	75mg	3%
Total Carbohydrate	25g	9%
Dietary Fiber	0g	0%
Total Sugars	13g	
Includes 12g Added Sugars		24%
Protein	2g	
Nutrients	% DAILY VALUE	
Vitamin D	0mcg	0%
Calcium	94mg	8%
Iron	0mg	0%
Potassium	79mg	2%
Vitamin A	4mcg	0%



Strawberry Scooter Crunch Bar

INGREDIENTS:

NONFAT ICE CREAM (NONFAT MILK, SUGAR, CORN SYRUP, WHEY, ARTIFICIAL FLAVOR, HIGH FRUCTOSE CORN SYRUP, MALTODEXTRIN, MONO & DIGLYCERIDES, LOCUST BEAN GUM, CELLULOSE GUM, GUAR GUM, FOOD STARCH, POLYSORBATE 80, CARRAGEENAN, WATER, VITAMIN A PALMITATE), FLAVORED CENTER (WATER, SUGAR, DEXTROSE, MALIC ACID, ARTIFICIAL FLAVOR, LOCUST BEAN GUM, CAROB BEAN GUM, GUAR GUM, MODIFIED CELLULOSE, PROPYLENE GLYCOL ALGINATE, RED 40, ADIPIC ACID), CRUNCH COATING (CAKE CRUNCHES [BLEACHES WHEAT FLOUR, SUGAR, PALM OIL, SALT, BAKING SODA, ARTIFICIAL FLAVOR, SOY LECITHIN, ARTIFICIAL COLOR], NONFAT MILK POWDER, SOYBEAN OIL, REFINED COCONUT OIL, SOY LECITHIN).

CONTAINS: MILK, SOY, WHEAT.

REVIEWED
MARCH, 2024



ITEM #: 24682-31151

CASE COUNT: 36



FAT FREE FUDGE-O BAR

A delicious chocolatey fudge bar!

Serving Size: 1 Bar 2.00 Fl Oz. (68g)	% DAILY VALUE	
Calories:	90	
Total Fat	0g	0%
Saturated Fat	0g	0%
Trans Fat	0g	
Cholesterol	5mg	1%
Sodium	40mg	2%
Total Carbohydrate	20g	7%
Dietary Fiber	0g	0%
Total Sugars	14g	
Includes 8g Added Sugars		16%
Protein	3g	
Nutrients		
Vitamin D	0mcg	0%
Calcium	126mg	10%
Iron	0mg	0%
Potassium	121mg	2%

Under 100 Calories

Fat Free

No Artificial Color



INGREDIENTS:

NONFAT MILK, HIGH FRUCTOSE CORN SYRUP, CORN SYRUP, WHEY, COCOA (PROCESSED WITH ALKALI), MONO & DIGLYCERIDES, GUAR GUM, POLYSORBATE 80, CARRAGEENAN, ARTIFICIAL VANILLA FLAVOR.

CONTAINS: MILK.

FAT FREE!
Fudge-O
BAR



REVIEWED
MARCH, 2024

MEMBER
School
Nutrition
Association



ITEM #: 24682-31152

CASE COUNT: 36



LOW FAT COOKIES N' CREAM CONE

Low fat artificially flavored cookies and cream ice cream cone.

Serving Size: 1 Cone 4.00 Fl Oz. (62g)	% DAILY VALUE	
Calories:	140	
Total Fat	2.5g	3%
Saturated Fat	1.5g	8%
Trans Fat	0g	
Cholesterol	5mg	2%
Sodium	80mg	3%
Total Carbohydrate	24g	9%
Dietary Fiber	0g	0%
Total Sugars	14g	
Includes 10g Added Sugars		20%
Protein	3g	

Nutrients	% DAILY VALUE	
Vitamin D	0mcg	0%
Calcium	104mg	8%
Iron	0mg	0%
Potassium	96mg	2%
Vitamin A	6mcg	0%

REVIEWED
MARCH, 2024

MEMBER
School
Nutrition
Association



Low Fat

No High Fructose
Corn Syrup



INGREDIENTS:

LOW FAT ICE CREAM (NONFAT MILK, SUGAR, CORN SYRUP, WHEY, CREAM, CELLULOSE GEL, MONO & DIGLYCERIDES, CELLULOSE GUM, MALTODEXTRIN, POLYSORBATE 80, CARRAGEENAN, NATURAL AND ARTIFICIAL FLAVOR, VITAMIN A PALMITATE), CHOCOLATE CONE (BLEACHED WHEAT FLOUR, SUGAR, COCOA [PROCESSED WITH ALKALI], VEGETABLE SHORTENING [SOYBEAN OIL, PALM OIL, SOY LECITHIN], SALT, ARTIFICIAL FLAVOR), CHOCOLATE COOKIE TOPPING (BLEACHED WHEAT FLOUR, SUGAR, CARAMEL COLOR, PALM OIL, COCOA, BAKING SODA, SALT, SOY LECITHIN).

CONTAINS: MILK, SOY, WHEAT.



ITEM #: 24682-31306

CASE COUNT: 24



LOW FAT CRAZY CONE

The wacky colored low fat vanilla ice cream cone.



Serving Size: 1 Cone 4.00 Fl Oz. (73g)		% DAILY VALUE
Calories:	140	
Total Fat	2.5g	3%
Saturated Fat	1.5g	8%
Trans Fat	0g	
Cholesterol	10mg	3%
Sodium	95mg	4%
Total Carbohydrate	26g	9%
Dietary Fiber	0g	0%
Total Sugars	16g	
Includes 11g Added Sugars		22%
Protein	4g	
Nutrients		% DAILY VALUE
Vitamin D	0mcg	0%
Calcium	129mg	10%
Iron	0mg	0%
Potassium	202mg	4%
Vitamin A	8mcg	0%

Low Fat

No High Fructose
Corn Syrup



INGREDIENTS:

LOW FAT ICE CREAM (NONFAT MILK, SUGAR, CORN SYRUP, WHEY, CREAM, CELLULOSE GEL, ARTIFICIAL FLAVOR, MONO & DIGLYCERIDES, CELLULOSE GUM, MALTODEXTRIN, POLYSORBATE 80, SODIUM CHLORIDE, CITRIC ACID, CARRAGEENAN, VITAMIN A PALMITATE, YELLOW 5, BLUE 1), SUGAR CONE (BLEACHED WHEAT FLOUR, SUGAR, VEGETABLE SHORTENING [SOYBEAN OIL, PALM OIL, SOY LECITHIN], SALT, CARAMEL COLOR, ARTIFICIAL FLAVOR).

CONTAINS: MILK, SOY, WHEAT.

REVIEWED
MARCH, 2024

MEMBER
School
Nutrition
Association



ITEM #: 24682-31303

CASE COUNT: 24



LOW FAT VANILLA CHOCOLATE TWIST CONE

Low fat artificially flavored vanilla and chocolate twist ice cream cone.

Serving Size: 1 Cone 4.00 Fl Oz. (64g) % DAILY VALUE

Calories:	140	
Total Fat	2g	3%
Saturated Fat	1.5g	8%
Trans Fat	0g	
Cholesterol	5mg	2%
Sodium	60mg	3%
Total Carbohydrate	23g	8%
Dietary Fiber	1g	4%
Total Sugars	14g	
Includes 10g Added Sugars		20%
Protein	3g	

Nutrients % DAILY VALUE

Vitamin D	0mcg	0%
Calcium	87mg	6%
Iron	1mg	6%
Potassium	120mg	2%
Vitamin A	9mcg	2%

REVIEWED
MARCH, 2024

MEMBER
School
Nutrition
Association



Low Fat

No High Fructose
Corn Syrup



INGREDIENTS:

LOW FAT ICE CREAM (NONFAT MILK, SUGAR, CORN SYRUP, WHEY, CREAM, MALTITOL SYRUP, GLYCERIN, COCOA [PROCESSED WITH ALKALI], CHOCOLATE LIQUOR, AMYLASE ENZYME, CELLULOSE GEL, MONO & DIGLYCERIDES, CELLULOSE GUM, MODIFIED CORN STARCH, SALT, GUAR GUM, CITRIC ACID, NATURAL AND ARTIFICIAL VANILLA FLAVOR, MALTODEXTRIN, POLYSORBATE 80, CARRAGEENAN, VITAMIN A PALMITATE), SUGAR CONE (BLEACHED WHEAT FLOUR, SUGAR, VEGETABLE SHORTENING [SOYBEAN OIL, PALM OIL, SOY LECITHIN], SALT, CARAMEL COLOR, ARTIFICIAL FLAVOR), CHOCOLATE SPRINKLES (SUGAR, CORN STARCH, PALM OIL, PALM KERNEL OIL, COCOA [PROCESSED WITH ALKALI], SUNFLOWER LECITHIN, DEXTRIN, CONFECTIONER'S GLAZE, NATURAL AND ARTIFICIAL FLAVOR, CARNAUBA WAX).

CONTAINS: MILK, SOY, WHEAT.

ITEM #: 24682-31307

CASE COUNT: 24





Smart Snack Approved

LOW FAT VANILLA ICE CREAM SANDWICH

Low fat artificially flavored vanilla ice cream and chocolate wafers.

Serving Size: 1 Sandwich 4.00 Fl Oz. (65g)	% DAILY VALUE	
Calories:	140	
Total Fat	2.5g	3%
Saturated Fat	1.5g	8%
Trans Fat	0g	
Cholesterol	5mg	2%
Sodium	140mg	6%
Total Carbohydrate	27g	10%
Dietary Fiber	1g	4%
Total Sugars	15g	
Includes 11g Added Sugars		22%
Protein	3g	

Nutrients	% DAILY VALUE	
Vitamin D	0mcg	0%
Calcium	100mg	8%
Iron	0mg	0%
Potassium	163mg	4%
Vitamin A	6mcg	0%

REVIEWED
MARCH, 2024

MEMBER
School
Nutrition
Association



Low Fat



Low FAT
VANILLA
ICE CREAM
Sandwich



INGREDIENTS:

ICE CREAM (NONFAT MILK, SUGAR, CORN SYRUP, WHEY, CREAM, ARTIFICIAL FLAVOR, CELLULOSE GEL, MONO & DIGLYCERIDES, CELLULOSE GUM, MALTODEXTRIN, POLYSORBATE 80, CARRAGEENAN, VITAMIN A PALMITATE), WAFER (BLEACHED WHEAT FLOUR, SUGAR, CARAMEL COLOR, DEXTROSE, PALM OIL, CORN FLOUR, COCOA, HIGH FRUCTOSE CORN SYRUP, BAKING SODA, MODIFIED CORN STARCH, SALT, MONO & DIGLYCERIDES, SOY LECITHIN).

CONTAINS: MILK, SOY, WHEAT.

ITEM #: 24682-31319

CASE COUNT: 24



LOW FAT COOKIES & CREAM ICE CREAM SANDWICH

Low fat cookies & cream flavored ice cream
and chocolate wafers.

Serving Size: 1 Sandwich 4.00 Fl Oz. (65g)	% DAILY VALUE	
Calories:	140	
Total Fat	2.5g	3%
Saturated Fat	1.5g	8%
Trans Fat	0g	
Cholesterol	5mg	2%
Sodium	150mg	7%
Total Carbohydrate	27g	10%
Dietary Fiber	1g	4%
Total Sugars	15g	
Includes 10g Added Sugars		20%
Protein	3g	

Nutrients	% DAILY VALUE	
Vitamin D	0mcg	0%
Calcium	101mg	8%
Iron	0mg	0%
Potassium	166mg	4%
Vitamin A	6mcg	0%

REVIEWED
MARCH, 2024



Low Fat



INGREDIENTS:

ICE CREAM (NONFAT MILK, SUGAR, CORN SYRUP, WHEY, CREAM, CHOCOLATE COOKIE CRUMB (ENRICHED FLOUR [WHEAT FLOUR, NIACIN, REDUCED IRON, THIAMINE MONONITRATE, RIBOFLAVIN, FOLIC ACID], SUGAR, COCOA [PROCESSED WITH ALKALI], PALM OIL, HIGH FRUCTOSE CORN SYRUP, CHOCOLATE LIQUOR, SALT, CORN FLOUR, DEXTROSE, BAKING SODA, SOY LECITHIN), CELLULOSE GEL, MONO & DIGLYCERIDES, CELLULOSE GUM, MALTODEXTRIN, POLYSORBATE 80, CARRAGEENAN, NATURAL AND ARTIFICIAL FLAVOR, VITAMIN A PALMITATE), WAFER (BLEACHED WHEAT FLOUR, SUGAR, CARAMEL COLOR, DEXTROSE, PALM OIL, CORN FLOUR, COCOA, HIGH FRUCTOSE CORN SYRUP, BAKING SODA, MODIFIED CORN STARCH, SALT, MONO & DIGLYCERIDES, SOY LECITHIN).

CONTAINS: MILK, SOY, WHEAT.



ITEM #: 24682-31355

CASE COUNT: 24



LOW FAT VANILLA MIGHTY MINI ICE CREAM SANDWICH

Our miniature sized low fat artificially flavored vanilla ice cream and chocolate wafers.



Serving Size: 1 Sandwich 2.50 Fl Oz. (44g)		% DAILY VALUE
Calories:	100	
Total Fat	2g	3%
Saturated Fat	1g	5%
Trans Fat	0g	
Cholesterol	5mg	2%
Sodium	100mg	4%
Total Carbohydrate	19g	7%
Dietary Fiber	0g	0%
Total Sugars	10g	
Includes 7g Added Sugars		14%
Protein	2g	
Nutrients		% DAILY VALUE
Vitamin D	0mcg	0%
Calcium	65mg	6%
Iron	0mg	0%
Potassium	107mg	2%
Vitamin A	4mcg	0%

Only 100 Calories

Low Fat



INGREDIENTS:

ICE CREAM (NONFAT MILK, SUGAR, CORN SYRUP, WHEY, CREAM, ARTIFICIAL FLAVOR, CELLULOSE GEL, MONO & DIGLYCERIDES, CELLULOSE GUM, MALTODEXTRIN, POLYSORBATE 80, CARRAGEENAN, VITAMIN A PALMITATE), WAFER (BLEACHED WHEAT FLOUR, SUGAR, CARAMEL COLOR, DEXTROSE, PALM OIL, CORN FLOUR, COCOA, HIGH FRUCTOSE CORN SYRUP, BAKING SODA, MODIFIED CORN STARCH, SALT, MONO & DIGLYCERIDES, SOY LECITHIN).

CONTAINS: MILK, SOY, WHEAT.

REVIEWED
MARCH, 2024

MEMBER
School
Nutrition
Association



ITEM #: 24682-31352

CASE COUNT: 48



LOW FAT VANILLA ICE CREAM DESSERT CUP

Single serving of a low fat vanilla ice cream in a plastic cup.

Serving Size: 1 Cup 3.00 Fl Oz. (52g)		% DAILY VALUE
Calories:	100	
Total Fat	1.5g	2%
Saturated Fat	1g	6%
Trans Fat	0g	
Cholesterol	5mg	2%
Sodium	35mg	2%
Total Carbohydrate	16g	6%
Dietary Fiber	0g	0%
Total Sugars	12g	
Includes 7g Added Sugars		14%
Protein	3g	
Nutrients		% DAILY VALUE
Vitamin D	0mcg	0%
Calcium	120mg	10%
Iron	0mg	0%
Potassium	110mg	2%
Vitamin A	37mcg	4%

Low Fat

No Artificial Flavors

No Artificial Colors

No High Fructose
Corn Syrup



INGREDIENTS:

NONFAT MILK, SUGAR, CORN SYRUP, WHEY, CREAM, NATURAL VANILLA FLAVOR, CELLULOSE GEL, MONO & DIGLYCERIDES, CELLULOSE GUM, MALTODEXTRIN, POLYSORBATE 80, CARRAGEENAN, VITAMIN A PALMITATE.

CONTAINS: MILK.



REVIEWED
MARCH, 2024

MEMBER
School
Nutrition
Association



ITEM #: 24682-31669

CASE COUNT: 48



LOW FAT CHOCOLATE SUNDAE DESSERT CUP

Single serving of a low fat vanilla ice cream with chocolate sauce in a plastic cup.

Serving Size: 1 Cup 3.00 Fl Oz. (52g)	% DAILY VALUE	
Calories:	100	
Total Fat	1.5g	2%
Saturated Fat	1g	5%
Trans Fat	0g	
Cholesterol	5mg	2%
Sodium	35mg	2%
Total Carbohydrate	18g	6%
Dietary Fiber	0g	0%
Total Sugars	13g	
Includes 8g Added Sugars		16%
Protein	3g	

Nutrients	% DAILY VALUE	
Vitamin D	0mcg	0%
Calcium	105mg	8%
Iron	1mg	4%
Potassium	180mg	4%
Vitamin A	37mcg	4%

Low Fat

No Artificial Flavors

No Artificial Colors

No High Fructose
Corn Syrup



INGREDIENTS:

ICE CREAM (NONFAT MILK, SUGAR, CORN SYRUP, WHEY, CREAM, NATURAL VANILLA FLAVOR, CELLULOSE GEL, MONO & DIGLYCERIDES, CELLULOSE GUM, MALTODEXTRIN, POLYSORBATE 80, CARRAGEENAN, VITAMIN A PALMITATE), CHOCOLATE SWIRL (CORN SYRUP, WATER, COCOA [PROCESSED WITH ALKALI], MODIFIED CORN STARCH, SALT, CITRIC ACID, NATURAL VANILLA FLAVOR).
CONTAINS: MILK.

REVIEWED
MARCH, 2024

MEMBER
School
Nutrition
Association



ITEM #: 24682-31677

CASE COUNT: 48



LOW FAT STRAWBERRY SUNDAE DESSERT CUP

Single serving of a low fat vanilla ice cream with strawberry sauce in a plastic cup.

Serving Size: 1 Cup 3.00 Fl Oz. (52g)		% DAILY VALUE
Calories:	100	
Total Fat	1.5g	2%
Saturated Fat	1g	5%
Trans Fat	0g	
Cholesterol	5mg	2%
Sodium	35mg	2%
Total Carbohydrate	18g	6%
Dietary Fiber	0g	0%
Total Sugars	14g	
Includes 8g Added Sugars		16%
Protein	3g	
Nutrients		% DAILY VALUE
Vitamin D	0mcg	0%
Calcium	105mg	8%
Iron	0mg	0%
Potassium	110mg	2%
Vitamin A	37mcg	4%

Low Fat

No Artificial Flavors

No Artificial Colors

No High Fructose
Corn Syrup



INGREDIENTS:

ICE CREAM (NONFAT MILK, SUGAR, CORN SYRUP, WHEY, CREAM, NATURAL VANILLA FLAVOR, CELLULOSE GEL, MONO & DIGLYCERIDES, CELLULOSE GUM, MALTODEXTRIN, POLYSORBATE 80, CARRAGEENAN, VITAMIN A PALMITATE), STRAWBERRY SAUCE (SUGAR, CORN SYRUP, WATER, STRAWBERRY, CARRAGEENAN, CORN STARCH, CITRIC ACID, DEXTROSE, LOCUST BEAN GUM, PECTIN, NATURAL FLAVORS, FRUIT AND VEGETABLE JUICE [COLOR]).

CONTAINS: MILK.



REVIEWED
MARCH, 2024

MEMBER
School
Nutrition
Association



ITEM #: 24682-31676

CASE COUNT: 48



SILLYTUBES PUSH-UP POP



Natural Watermelon flavored Apple Juice Push-up Tube.

Serving Size:	1 Cup (60g)	% DAILY VALUE
Calories:	60	
Total Fat	0g	0%
Saturated Fat	0g	0%
Trans Fat	0g	
Cholesterol	0mg	0%
Sodium	0mg	0%
Total Carbohydrate	16g	6%
Dietary Fiber	0g	0%
Total Sugars	14g	
Includes 7g Added Sugar		14%
Protein	0g	
Nutrients		% DAILY VALUE
Vitamin D	0mcg	0%
Calcium	7mg	0%
Iron	0mg	0%
Potassium	55mg	2%

Under 100 Calories

Fat Free

No High Fructose
Corn Syrup

No Artificial Flavors

No Artificial Colors

Equal to 1/4 Cup
of Fruit



INGREDIENTS:

APPLE JUICE (WATER, APPLE JUICE CONCENTRATE), SUGAR, CORN SYRUP, CAROB BEAN GUM, MODIFIED CELLULOSE, GUAR GUM, DEXTROSE, CITRIC ACID, NATURAL FLAVOR, ASCORBIC ACID, SPIRULINA EXTRACT (COLOR), ANNATTO (COLOR), RED BEET CONCENTRATE (COLOR).



REVIEWED
MARCH, 2024



ITEM #: 0 24682-40001 9

CASE COUNT: 24



FAT FREE COTTON CANDY TWISTER CUP

Cotton candy flavored fat free frozen yogurt twister cup.

Serving Size: 1 Cup 3.75 Fl Oz. (66g) % DAILY VALUE

Calories: 90

Total Fat 0g 0%

Saturated Fat 0g 0%

Trans Fat 0g

Cholesterol 0mg 0%

Sodium 40mg 2%

Total Carbohydrate 19g 7%

Dietary Fiber 0g 0%

Total Sugars 14g

Includes 12g Added Sugars 24%

Protein 2g

Nutrients % DAILY VALUE

Vitamin D 0mcg 0%

Calcium 86mg 6%

Iron 0mg 0%

Potassium 20mg 0%

Only 100 Calories

Fat Free

No High Fructose
Corn Syrup



INGREDIENTS:

NONFAT MILK, SUGAR, CORN SYRUP, WHEY PROTEIN CONCENTRATE, CULTURED DAIRY SOLIDS, MONO & DIGLYCERIDES, NATURAL AND ARTIFICIAL FLAVORS, LOCUST BEAN GUM, GUAR GUM, SODIUM CITRATE, CALCIUM SULFATE, CARRAGEENAN, CREAM, RED 40, BLUE 1. LIVE CULTURES ADDED.

CONTAINS: MILK.

REVIEWED
MARCH, 2024

MEMBER
School
Nutrition
Association



ITEM #: 24682-50245

CASE COUNT: 18





STRAWBERRY TROPI-KOOL® FRUIT BAR

A frozen fruit bar with real strawberries.

Serving Size: 1 Bar 4.00 Fl Oz. (115g)		% DAILY VALUE
Calories:	110	
Total Fat	0g	0%
Saturated Fat	0g	0%
Trans Fat	0g	
Cholesterol	0mg	0%
Sodium	10mg	0%
Total Carbohydrate	28g	10%
Dietary Fiber	1g	3%
Total Sugars	24g	
Includes 21g Added Sugars		43%
Protein	0g	
Nutrients		% DAILY VALUE
Vitamin D	0mcg	0%
Calcium	7mg	0%
Iron	0mg	0%
Potassium	62mg	2%

Fat Free

No Artificial Flavors

No Artificial Colors

*No High Fructose
Corn Syrup*



INGREDIENTS:

STRAWBERRIES, WATER, SUGAR, CORN SYRUP SOLIDS, STRAWBERRY JUICE CONCENTRATE, NATURAL FLAVOR, BEET JUICE CONCENTRATE (COLOR), GUAR GUM, XANTHAN GUM, CITRIC ACID.



REVIEWED
MARCH, 2024

MEMBER
School
Nutrition
Association



ITEM #: 24682-31234

CASE COUNT: 24



MANGO TROPI-KOOL® FRUIT BAR

A frozen fruit bar with real mango.

Serving Size: 1 Bar 4.00 Fl Oz. (115g)		% DAILY VALUE
Calories:	110	
Total Fat	0g	0%
Saturated Fat	0g	0%
Trans Fat	0g	
Cholesterol	0mg	0%
Sodium	0mg	0%
Total Carbohydrate	27g	10%
Dietary Fiber	1g	3%
Total Sugars	23g	
Includes 16g Added Sugars		33%
Protein	0g	
Nutrients		% DAILY VALUE
Vitamin D	0.4mcg	2%
Calcium	10mg	0%
Iron	0mg	0%
Potassium	110mg	2%

Fat Free

No Artificial Flavors

No Artificial Colors

*No High Fructose
Corn Syrup*



INGREDIENTS:

MANGO, WATER, SUGAR, CORN SYRUP SOLIDS, CITRIC ACID, GUAR GUM, XANTHAN GUM.



MEMBER
School
Nutrition
Association



ITEM #: 24682-31232

CASE COUNT: 24

REVIEWED
MARCH, 2024



CHERRY BLUE RASPBERRY JUICE RUSH®

Cherry and blue raspberry frozen snack made from
100% fruit juice.

Serving Size: 1 Cup 4.40 Fl Oz. (140g) % DAILY VALUE

Calories:	50	
Total Fat	0g	0%
Saturated Fat	0g	0%
Trans Fat	0g	
Cholesterol	0mg	0%
Sodium	0mg	0%
Total Carbohydrate	12g	4%
Dietary Fiber	0g	0%
Total Sugars	12g	
Includes 0g Added Sugars		0%
Protein	0g	

Nutrients		% DAILY VALUE
Vitamin D	0mcg	0%
Calcium	18mg	2%
Iron	1mg	6%
Potassium	104mg	2%

Under 100 Calories

Fat Free

No Artificial Flavor

No Added Sugar

No High Fructose
Corn Syrup



INGREDIENTS:

APPLE JUICE (WATER, APPLE JUICE CONCENTRATE), ALLULOSE, CELLULOSE GUM, NATURAL FLAVOR, GUAR GUM, XANTHAN GUM, STEVIA EXTRACT, CHERRY JUICE CONCENTRATE, RED 40, BLUE 1, RASPBERRY JUICE CONCENTRATE, CITRIC ACID.



Made With
100% FRUIT JUICE

REVIEWED
MARCH, 2024

MEMBER
School
Nutrition
Association



ITEM #: 24682-31700

CASE COUNT: 80



STRAWBERRY MANGO JUICE RUSH®

Natural strawberry mango flavored frozen snack made from 100% fruit juice.

Serving Size: 1 Cup 4.40 Fl Oz. (140g) % DAILY VALUE		
Calories:	50	
Total Fat	0g	0%
Saturated Fat	0g	0%
Trans Fat	0g	
Cholesterol	0mg	0%
Sodium	0mg	0%
Total Carbohydrate	12g	4%
Dietary Fiber	0g	0%
Total Sugars	12g	
Includes 0g Added Sugars		0%
Protein	0g	
Nutrients		
		% DAILY VALUE
Vitamin D	0mcg	0%
Calcium	18mg	2%
Iron	1mg	6%
Potassium	104mg	2%

Under 100 Calories

Fat Free

No Artificial Flavor

No Added Sugar

No High Fructose
Corn Syrup



INGREDIENTS:

APPLE JUICE (WATER, APPLE JUICE CONCENTRATE), ALLULOSE, CELLULOSE GUM, NATURAL FLAVOR, GUAR GUM, XANTHAN GUM, STEVIA EXTRACT, FRUIT AND VEGETABLE EXTRACT (COLOR), TURMERIC EXTRACTS (COLOR), CITRIC ACID.



Made With
100% FRUIT JUICE

REVIEWED
MARCH, 2024

MEMBER
School
Nutrition
Association



ITEM #: 24682-31702

CASE COUNT: 80



FAT FREE VANILLA YOGURT DESSERT CUP

Single serving of a fat free vanilla yogurt in a foam cup.



Serving Size: 1 Cup 4.00 Fl Oz. (71g)		% DAILY VALUE
Calories:	90	
Total Fat	0g	0%
Saturated Fat	0g	0%
Trans Fat	0g	
Cholesterol	5mg	2%
Sodium	45mg	2%
Total Carbohydrate	20g	7%
Dietary Fiber	0g	0%
Total Sugars	15g	
Includes 13g Added Sugars		26%
Protein	2g	
Nutrients		% DAILY VALUE
Vitamin D	0mcg	0%
Calcium	92mg	8%
Iron	0mg	0%
Potassium	22mg	0%

Under 100 Calories

Fat Free

No Artificial Color

*No High Fructose
Corn Syrup*



INGREDIENTS:

NONFAT MILK, SUGAR, CORN SYRUP, WHEY, PROTEIN CONCENTRATE, CULTURED DAIRY SOLIDS, MONO & DIGLYCERIDES, NATURAL AND ARTIFICIAL FLAVORS, LOCUST BEAN GUM, GUAR GUM, SODIUM CITRATE, CALCIUM SULFATE, CARRAGEENAN, CREAM. LIVE CULTURES ADDED.

CONTAINS: MILK.

REVIEWED
MARCH, 2024

MEMBER
School
Nutrition
Association



ITEM #: 24682-31570

CASE COUNT: 24



LEMON SHERBET DESSERT CUP

Single serving of a refreshing lemon sherbet in a foam cup.



Serving Size: 1 Cup 4.00 Fl Oz. (96g)		% DAILY VALUE
Calories:	140	
Total Fat	1.5g	2%
Saturated Fat	1g	5%
Trans Fat	0g	
Cholesterol	5mg	2%
Sodium	35mg	2%
Total Carbohydrate	30g	11%
Dietary Fiber	0g	0%
Total Sugars	23g	
Includes 21g Added Sugars		42%
Protein	1g	
Nutrients		% DAILY VALUE
Vitamin D	0mcg	0%
Calcium	57mg	4%
Iron	0mg	0%
Potassium	81mg	2%

Low Fat

No Artificial Flavor



INGREDIENTS:

NONFAT MILK, HIGH FRUCTOSE CORN SYRUP, SUGAR, WATER, CORN SYRUP, WHEY, CREAM, NATURAL FLAVOR, YELLOW 5, CAROB BEAN GUM, MODIFIED CELLULOSE, GUAR GUM, DEXTROSE, CITRIC ACID.

CONTAINS: MILK.

REVIEWED
MARCH, 2024

MEMBER
School
Nutrition
Association



ITEM #: 24682-31480

CASE COUNT: 24



ORANGE SHERBET DESSERT CUP

Single serving of a refreshing orange sherbet in a foam cup.



Serving Size: 1 Cup 4.00 Fl Oz. (96g)		% DAILY VALUE
Calories:	140	
Total Fat	1.5g	2%
Saturated Fat	1g	5%
Trans Fat	0g	
Cholesterol	5mg	2%
Sodium	35mg	2%
Total Carbohydrate	30g	11%
Dietary Fiber	0g	0%
Total Sugars	23g	
Includes 20g Added Sugars		40%
Protein	1g	
Nutrients		% DAILY VALUE
Vitamin D	0mcg	0%
Calcium	56mg	4%
Iron	0mg	0%
Potassium	85mg	2%

Low Fat

No Artificial Flavor



INGREDIENTS:

NONFAT MILK, HIGH FRUCTOSE CORN SYRUP, SUGAR, WATER, CORN SYRUP, WHEY, CREAM, ORANGE PUREE (WATER, ORANGE JUICE CONCENTRATE, NATURAL FLAVOR, ORANGE PULP, GUM TRAGACANTH, YELLOW 6, CITRIC ACID), CAROB BEAN GUM, MODIFIED CELLULOSE, GUAR GUM, NATURAL FLAVOR, YELLOW 5 & 6, RED 40.

CONTAINS: MILK.

REVIEWED
MARCH, 2024

MEMBER
School
Nutrition
Association



ITEM #: 24682-31490

CASE COUNT: 24



RASPBERRY SHERBET DESSERT CUP

Single serving of a refreshing raspberry sherbet in a foam cup.



Serving Size: 1 Cup 4.00 Fl Oz. (96g)		% DAILY VALUE
Calories:	140	
Total Fat	1.5g	2%
Saturated Fat	1g	5%
Trans Fat	0g	
Cholesterol	5mg	2%
Sodium	30mg	1%
Total Carbohydrate	32g	12%
Dietary Fiber	0g	0%
Total Sugars	26g	
Includes 23g Added Sugars		46%
Protein	1g	
Nutrients		% DAILY VALUE
Vitamin D	0mcg	0%
Calcium	52mg	4%
Iron	0mg	0%
Potassium	76mg	2%

Low Fat

No Artificial Flavor



INGREDIENTS:

NONFAT MILK, HIGH FRUCTOSE CORN SYRUP, SUGAR, CORN SYRUP, RASPBERRY PUREE, WHEY, CREAM, CAROB BEAN GUM, MODIFIED CELLULOSE, NATURAL FLAVOR, LOCUST BEAN GUM, GUAR GUM, DEXTROSE, RED 40, BLUE 1, CITRIC ACID.

CONTAINS: MILK.

REVIEWED
MARCH, 2024

MEMBER
School
Nutrition
Association



ITEM #: 24682-31500

CASE COUNT: 24



WHOLE GRAIN CHOCOLATE BROWNIE COOKIE

A delicious whole grain chocolate cookie with chocolate chips throughout.

Serving Size:	1 OZ. (28g)	% DAILY VALUE
Calories:	100	
Total Fat	3.5g	4%
Saturated Fat	1g	5%
Trans Fat	0g	
Cholesterol	5mg	2%
Sodium	90mg	4%
Total Carbohydrate	17g	6%
Dietary Fiber	1g	4%
Total Sugars	8g	
Includes 8g Added Sugars		16%
Protein	2g	
Nutrients		% DAILY VALUE
Vitamin D	0mcg	0%
Calcium	12mg	0%
Iron	1mg	6%
Potassium	95mg	2%

REVIEWED
MARCH, 2024

MEMBER
School
Nutrition
Association



Only 100 Calories

No Artificial Flavor

No Artificial Color

Whole Grain

No High Fructose
Corn Syrup



INGREDIENTS:

WHEAT FLOUR BLEND (WHOLE WHEAT FLOUR, ENRICHED WHEAT FLOUR (WHEAT, NIACIN, REDUCED IRON, THIAMINE MONONITRATE, RIBOFLAVIN, FOLIC ACID), MARGARINE (VEGETABLE OIL BLEND [PALM FRUIT OIL, SOYBEAN & OLIVE OILS] WATER, SALT, MONO AND DIGLYCERIDES, NATURAL FLAVOR, VITAMIN A PALMITATE, BETA CAROTENE COLOR), BROWN SUGAR, SUGAR, CORN SYRUP, EGGS, COCOA PROCESSED WITH ALKALI, PRUNE PASTE, WATER, NATURAL VANILLA FLAVOR, BAKING POWDER (SODIUM ACID PYROPHOSPHATE, CORN STARCH, BAKING SODA, MONO CALCIUM PHOSPHATE), BAKING SODA, SALT.

CONTAINS: EGG, SOY, WHEAT.



ITEM #: 49578-33724 CASE COUNT: 360



WHOLE GRAIN SUGAR COOKIE

A sugar cookie you know and love, made with whole grains!



Serving Size:	1 OZ. (28g)	% DAILY VALUE
Calories:	110	
Total Fat	3.5g	4%
Saturated Fat	1g	5%
Trans Fat	0g	
Cholesterol	5mg	2%
Sodium	90mg	4%
Total Carbohydrate	18	7%
Dietary Fiber	1g	4%
Total Sugars	8g	
Includes 8g Added Sugars		16%
Protein	1g	
Nutrients		% DAILY VALUE
Vitamin D	0mcg	0%
Calcium	6mg	0%
Iron	1mg	6%
Potassium	34mg	0%

No Artificial Flavor

No Artificial Color

Whole Grain

No High Fructose
Corn Syrup



INGREDIENTS:

WHEAT FLOUR BLEND (WHOLE WHEAT FLOUR, ENRICHED WHEAT FLOUR [WHEAT, NIACIN, REDUCED IRON, THIAMINE MONONITRATE, RIBOFLAVIN, FOLIC ACID]), SUGAR, MARGARINE (VEGETABLE OIL BLEND [PALM FRUIT OIL, SOYBEAN AND OLIVE OILS] WATER, SALT, MONO AND DIGLYCERIDES, NATURAL FLAVOR, VITAMIN A PALMITATE, BETA CAROTENE COLOR), CORN SYRUP, EGGS, WATER, DEXTROSE, NATURAL VANILLA FLAVOR, BAKING SODA, BAKING POWDER (SODIUM ACID PYROPHOSPHATE, CORN STARCH, BAKING SODA, MONO CALCIUM PHOSPHATE), SALT.

CONTAINS: EGG, SOY, WHEAT.

REVIEWED
MARCH, 2024

MEMBER
School
Nutrition
Association



ITEM #: 49578-33723 CASE COUNT: 360



WHOLE GRAIN CHOCOLATE CHIP COOKIE

The chocolate chip cookie you know and love, made with whole grains!

Serving Size:	1 OZ. (28g)	% DAILY VALUE
Calories:	100	
Total Fat	3.5g	4%
Saturated Fat	1g	5%
Trans Fat	0g	
Cholesterol	5mg	2%
Sodium	85mg	4%
Total Carbohydrate	18g	7%
Dietary Fiber	1g	4%
Total Sugars	9g	
Includes 9g Added Sugars		18%
Protein	1g	
Nutrients		% DAILY VALUE
Vitamin D	0mcg	0%
Calcium	8mg	0%
Iron	1mg	6%
Potassium	48mg	2%

REVIEWED
MARCH, 2024

MEMBER
School
Nutrition
Association



Only 100 Calories

No Artificial Flavor

No Artificial Color

Whole Grain

*No High Fructose
Corn Syrup*



INGREDIENTS:

WHEAT FLOUR BLEND (WHOLE WHEAT FLOUR, ENRICHED WHEAT FLOUR (WHEAT, NIACIN, REDUCED IRON, THIAMINE MONONITRATE, RIBOFLAVIN, FOLIC ACID), SUGAR, BROWN SUGAR, MARGARINE (VEGETABLE OIL BLEND [PALM FRUIT OIL, SOYBEAN & OLIVE OILS], WATER, SALT, MONO AND DIGLYCERIDES, NATURAL FLAVOR, VITAMIN A PALMITATE, BETA CAROTENE COLOR), CHOCOLATE CHIPS (SUGAR, UNSWEETENED CHOCOLATE, COCOA BUTTER, SOY LECITHIN, NATURAL VANILLA), EGGS, CORN SYRUP, WATER, PRUNE PASTE, DEXTROSE, MOLASSES, BAKING SODA, SALT, NATURAL VANILLA FLAVOR, BAKING POWDER (SODIUM ACID PYROPHOSPHATE, CORN STARCH, BAKING SODA, MONO CALCIUM PHOSPHATE).

CONTAINS: EGG, SOY, WHEAT.



ITEM #: 49578-33721 CASE COUNT: 360



WHOLE GRAIN RAINBOW CANDY COOKIE

A delicious whole grain cookie filled with rainbow candies.

Serving Size:	1 OZ. (28g)	% DAILY VALUE
Calories:	100	
Total Fat	3g	4%
Saturated Fat	1g	5%
Trans Fat	0g	
Cholesterol	10mg	3%
Sodium	85mg	4%
Total Carbohydrate	18g	7%
Dietary Fiber	1g	4%
Total Sugars	9g	
Includes 8g Added Sugars		16%
Protein	1g	
Nutrients		% DAILY VALUE
Vitamin D	0mcg	0%
Calcium	8mg	0%
Iron	1mg	6%
Potassium	37mg	0%

Only 100 Calories

Whole Grain

No High Fructose
Corn Syrup



INGREDIENTS:

WHOLE WHEAT FLOUR, ENRICHED WHEAT FLOUR (WHEAT, BARLEY, NIACIN, REDUCED IRON, THIAMINE MONONITRATE, RIBOFLAVIN, FOLIC ACID), MARGARINE (VEGETABLE OIL BLEND [PALM FRUIT OIL, SOYBEAN & OLIVE OILS], WATER, SALT, MONO AND DIGLYCERIDES, NATURAL FLAVOR, VITAMIN A PALMITATE, BETA CAROTENE COLOR), BROWN SUGAR, RAINBOW CHOCOLATE CANDIES (SEMISWEET CHOCOLATE [SUGAR, COCOA MASS, COCOA BUTTER, COCOA SOLIDS, SOY LECITHIN, VANILLIN], CANDY COATING [ARTIFICIAL COLORS: FD&C YELLOW #5, YELLOW #6, RED #40, BLUE #1, TITANIUM DIOXIDE, POTATO STARCH, ACACIA GUM, PROPYLENE GLYCOL, CITRIC ACID, MALTODEXTRIN, CARNAUBA WAX]), SUGAR, EGGS, WATER, CORN SYRUP, PRUNE PASTE, DEXTROSE, MOLASSES, BAKING SODA, NATURAL VANILLA FLAVOR, SALT, BAKING POWDER (SODIUM ACID PYROPHOSPHATE, CORN STARCH, BAKING SODA, MONO CALCIUM PHOSPHATE).

CONTAINS: EGG, SOY, WHEAT.

REVIEWED
MARCH, 2024

MEMBER
School
Nutrition
Association



ITEM #: 49578-33725 CASE COUNT: 360